

TYLER CORBLEY

Holland, PA 18966 • (215) 559-4619 • TylerCorbley@gmail.com • Architect • Designer • Artist

PROFESSIONAL WORK

Schrader Group Architecture

Intern Architect
Manayunk, PA
2017, May to August

I interned at a 20 person firm in Manayunk, Pennsylvania. The work was almost exclusively in Revit. I was exposed to a wide variety of projects including but not limited to: early education, sports seating, and renovation of an existing high school. My work advanced the production of detail drawings, demolition drawings, construction drawings, building models, renderings, and site photography.

Kramer + Marks Architects

Intern Architect
Ambler, PA
2016, May to August

This internship was at a 40 person firm outside in Ambler. The work was mostly in Revit and occasionally AutoCAD. The work included detail drawings, transferring details from CAD to Revit, modeling furniture and rooms, developing construction documents, assisting extensive scheduling, and legend development.

Bruce Gilbert Construction.

Assistant Carpenter.
Holland, PA 18966
2014, May to August

This is a private construction company and I spent my time here working for one family. I co-constructed a deck and a breakfast nook bump out including the concrete footers, framing, house wrap, pitched roof, and shingling. It also included, deconstruction of the old deck and removing the siding from the house. Then we added new house wrap to a majority of the house. The landscaping required a new pathway to the house so we demolished the existing and poured new concrete.

HONORS

Piranesi Competition

2nd place recipient
I overcame a language barrier with Italian students to design a bath and museum.

Design Achievement

Fourth Year student design achievement award for designing "The B.E.A.C.H."

EDUCATION

The Pennsylvania State University

University Park, PA
Bachelor of Architecture
Graduate 2018

Master of Science of Architecture (Material Matters)
Graduate Candidate 2019

The Pantheon Institute

Rome, Italy
Study abroad
August - December 2016

DEVELOPMENT

Guitar Support Prototyping

2017
I develop a prototype for a patent pending guitar support
Most of the work involves CNC routing and wood shop construction
Part of the process is keeping progress logs, testing and revising

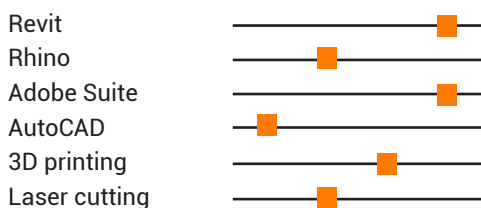
Digi Digits

2015 - 2016
Digi Digits is a club dedicated to 3D printing prosthetics for those in need. Using 3D printers, Rhino, and various physical tools, we assembled many hands very quickly and efficiently.
I was the production manager and oversaw 15 people for the printing and assembly of prosthetic hands. My work consisted of leading team members in 3D printing and construction of the hands.

Apparatus X

2013
Apparatus X is a mobile education and disaster relief effort by Aaron Wertman.
Media Manager
Utility seat co-designer
I designed a chair that also flipped open to be a step ladder

SKILLS



I invite you to explore my website for more of my work:
myhobbyis.com/portfolio/architecture/



Essex Carve

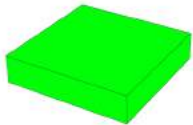
Essex Carve is a museum for Andy Warhol, a marketplace, and residential apartments on two city blocks.

There was so much space on the ground I felt it was vital to give most of it to the pedestrian life. I formed a square around the space and then carved away to respond to the nearby streets. The upper floors were carved down to create balconies and continue the same language.

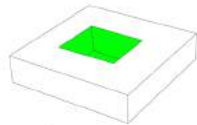
Section through the museum



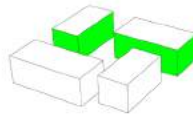
Form and Function Diagram



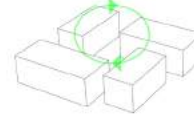
block



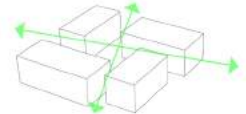
courtyard



alleyways

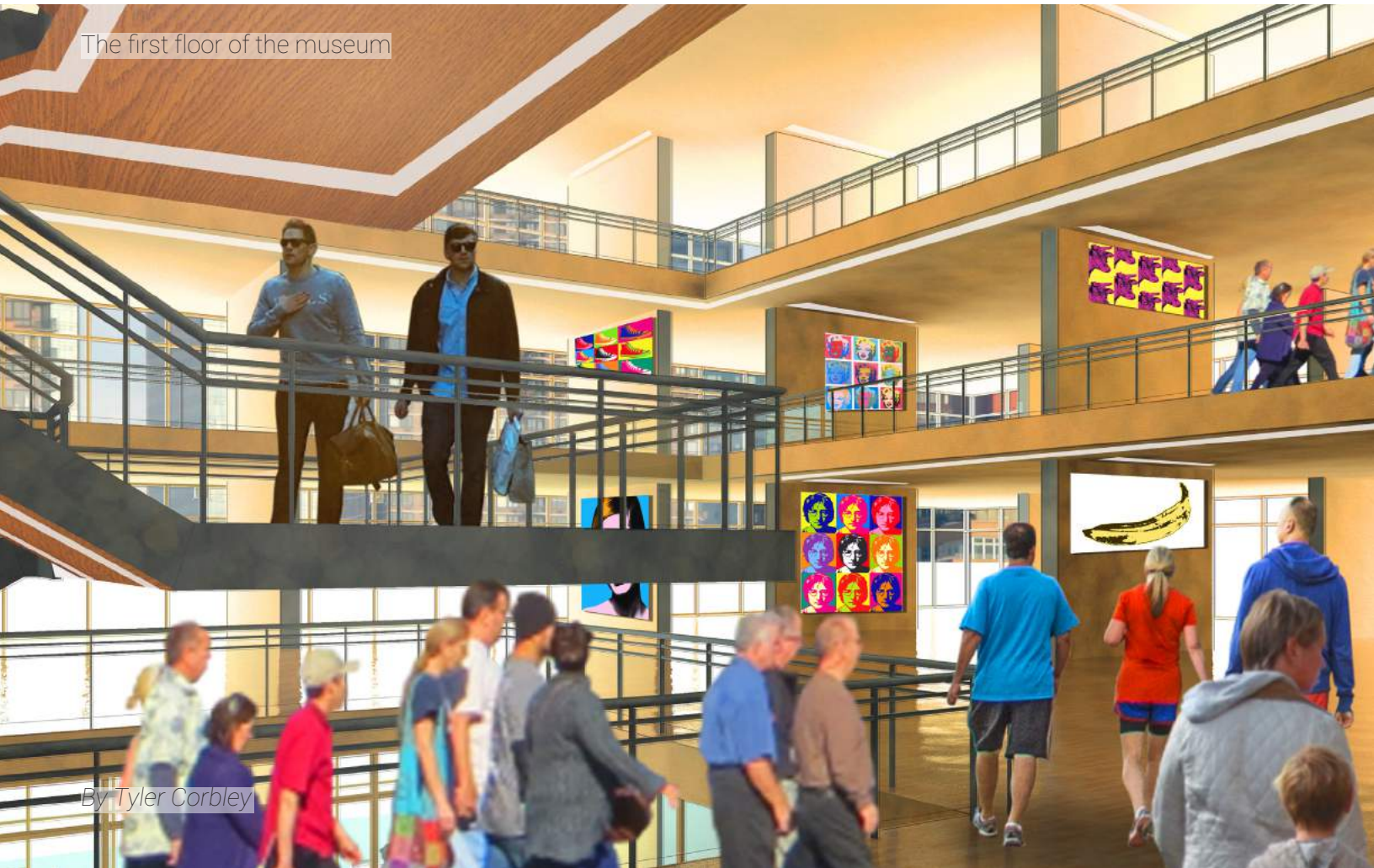


circulation



movement through

The first floor of the museum





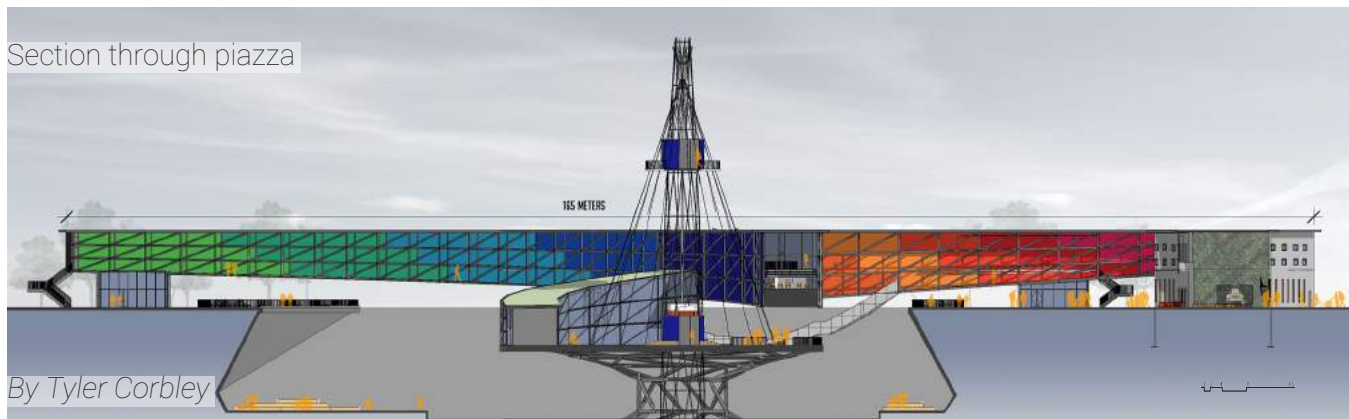
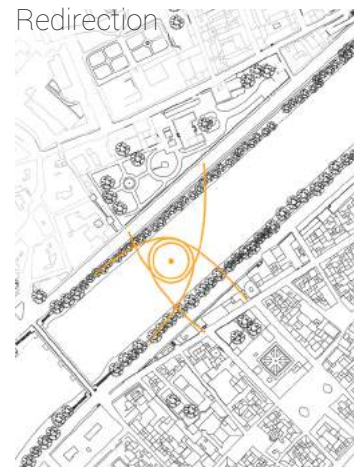
Tiber Redirection

Tiber Redirection is a proposal for a water research center and museum for the Tiber River in front of Palazzo Farnese.

We found several strong nodes around our site that we felt could be used to tie the two sides together. We connected these points by sweeping them around a strong central point. The resulting arcs were the form-work for our bridge and buildings. Using trusses with a layer of glass, the main buildings are held up and span the river. The concrete paths and resulting Piazza are held up by concrete columns.

My work on this project most notably included Revit modeling with massing, family editing, conceptual design, diagrams, and rendering.

Made by Tyler Corbley and Andrew Cacchio



By Tyler Corbley



By Andrew Cacchio



Bellefonte Education And Community Hub

The B.E.A.C.H. is an educational center that aims to bring students, the community, and aspiring gardeners/farmers together.

Harnessing passive resources, this model for sustainability acts as a destination where groups gather and classes are taught. The Bellefonte Education and Community Hub fosters a relationship between people and the environment. The series of gates (seen in orange) form a procession through the site, compressing and decompressing as they go depending on the space needed. The facade between each gate protects the interior rooms, but can be opened, creating an immediate inside/outside connection. The B.E.A.C.H. is led by its relationship to nature and community.

My work on this project most notably included Revit modeling with massing and parametric elements, project management, and rendering.

Made by Tyler Corbley, Paige Geldrich and Andrew Cacchio



Section through the education center and the community building.



Looking at the B.E.A.C.H. from the hill



By Tyler Corbley